



Concept GE Limited
Unit 12 West Moor Park
Network Centre
Yorkshire Way
Armthorpe
Doncaster.
DN3 3GW.



To complete the connectivity of a Tapley Meter to the MTS.

The MTS software just needs to be downloaded from the Bowmonk website – full user guide & download here [Bowmonk Connected \(MTS Software\) - Bowmonk](#)

Before we start:

The computer that you want to install our software on **MUST:**

- be running **Windows 7** or **later** (Both 32-Bit and 64-Bit versions are supported).
- Have a reliable connection to the internet.
- Have at least one USB port available for use.
- **Be 'Up to date' with the latest security updates from Microsoft (Please execute a Windows Update if you are not sure if you are up to date)**

Chromebooks, Apple Macs, Android tablets and iPads are not supported

The site AE or Site Manager will need to be present/available as there is a file, known as a 'key', that can only typically be requested from their MOT account.

If your computers are ran by an IT company, please ensure you have access to the **admin username and password** as this will be needed to proceed with the install. If you do not have this, your IT company will need to install the software for you.



www.concept-ge.co.uk

A member of the Garage
Equipment Association

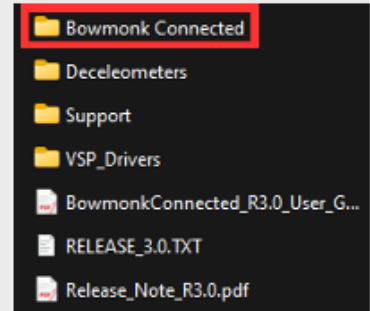


Installing Bowmonk Connected:

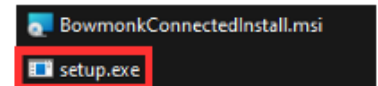
To download the software installer, you will need to head to the following website: www.bowmonk.com/mts

Then, click on **'Download the Latest Software Installer'**. This should start the download for the software.

Open the download by double clicking it, you should now have a window open with the following files displayed



Double click on the folder at the top named **Bowmonk Connected**, then double click on **'Setup.exe'**

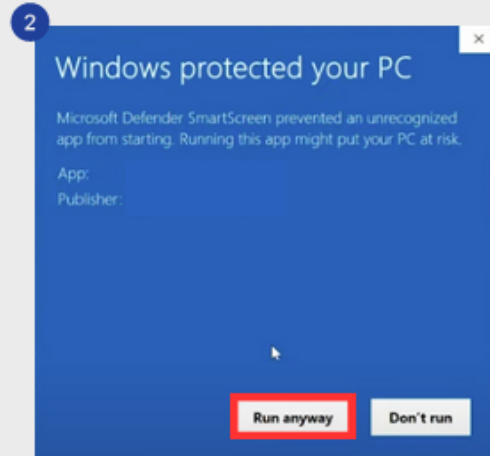
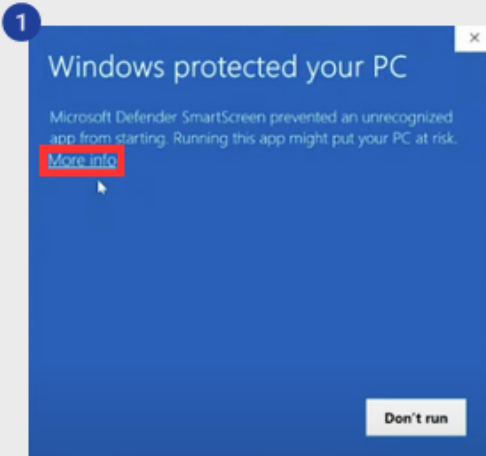


[*www.concept-ge.co.uk*](http://www.concept-ge.co.uk)

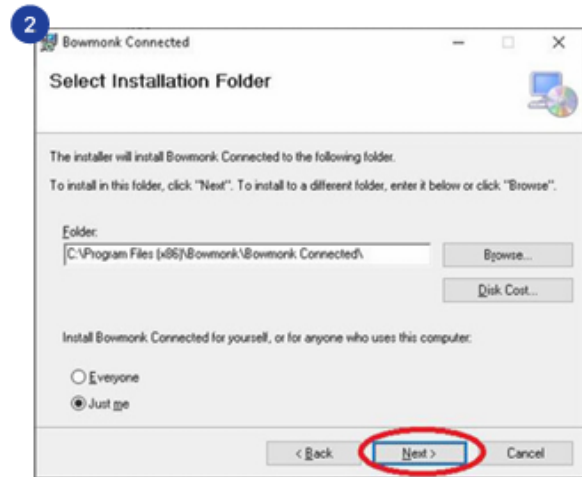
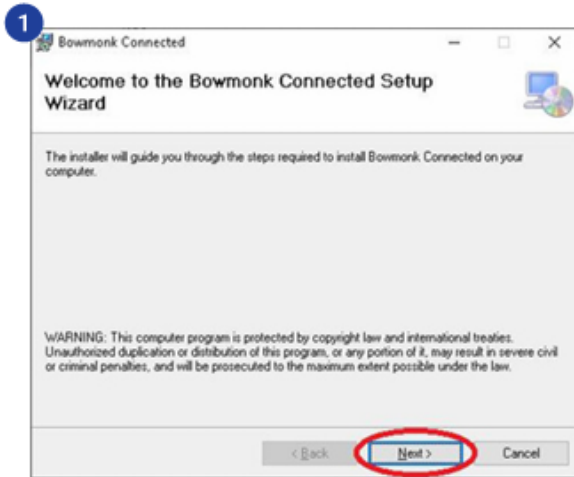
A member of the Garage
Equipment Association



The pop-up below may appear. If it does, click on **'More info'** then **'Run anyway'**.

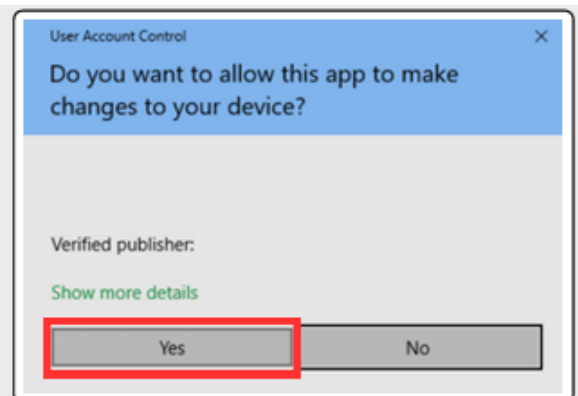


The software installer should now pop up, you will now need to click **'Next'** twice.



There will then be a prompt pop-up like so:

Please click **'Yes'** to this prompt.



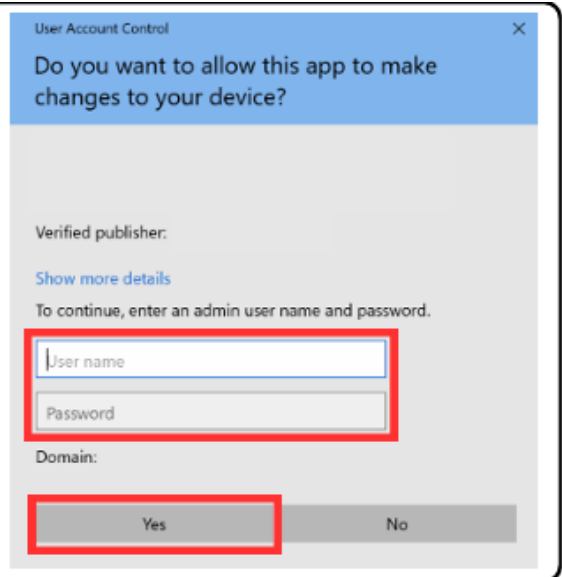
A member of the Garage Equipment Association



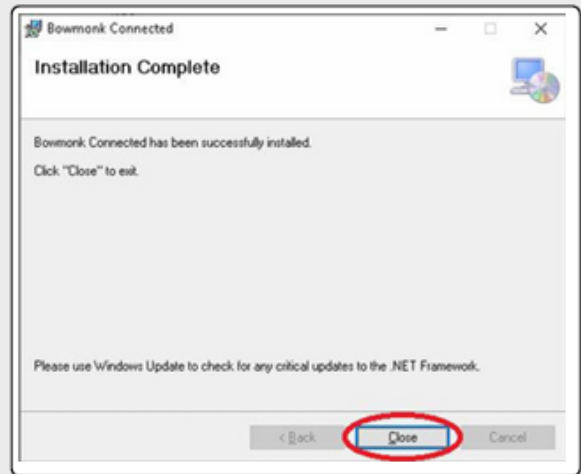
www.concept-ge.co.uk



If your computers are ran by an IT company, you may need them to enter the **username and password** now. Please do so and then click **'yes'** to this prompt



After this, you should now see the **'Installation Complete'** pop-up. Click **'Close'**.



Now if you look at your desktop screen, you should see an icon like so



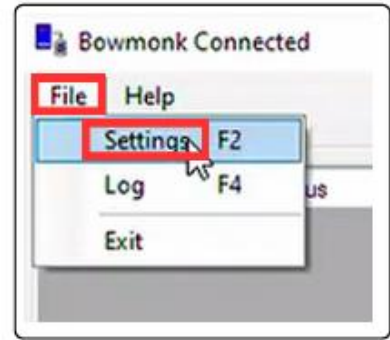
www.concept-ge.co.uk

A member of the Garage Equipment Association

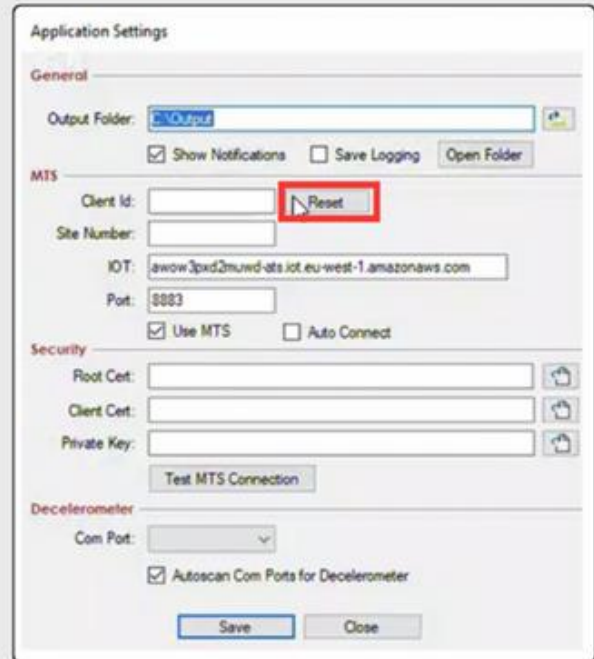


Inserting the 'Key' into Bowmonk Connected

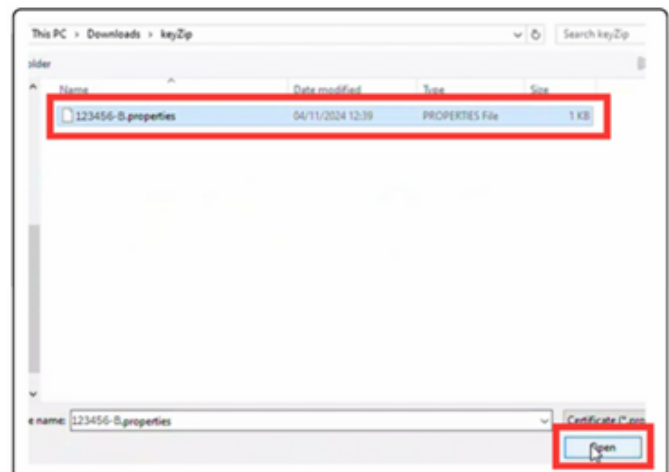
Open Bowmonk Connected by double clicking the desktop icon. Now click '**File**' in the top left corner of Bowmonk Connected, then '**Settings**'. The '**Application Settings**' box will then open.



Under the '**MTS**' section, to the right of the first box called '**Client Id**' there will be a '**Reset**' button. Click this '**Reset**' button then navigate to where the extracted key file folder is saved.



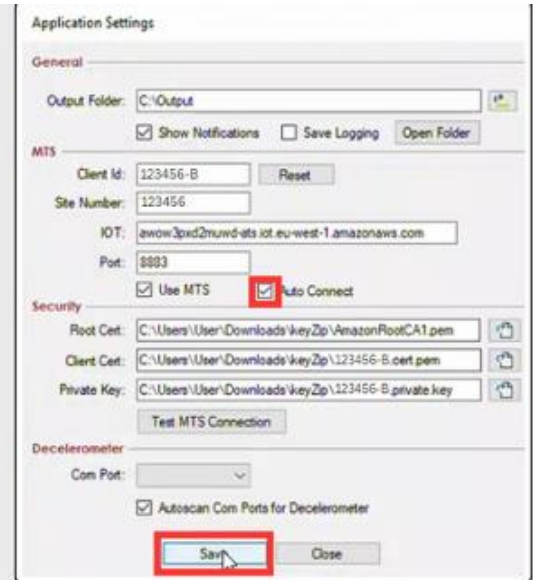
Double click the key file folder. Inside the folder should only be one file. Click on this file to select it and then click the '**Open**' button in the bottom right corner.



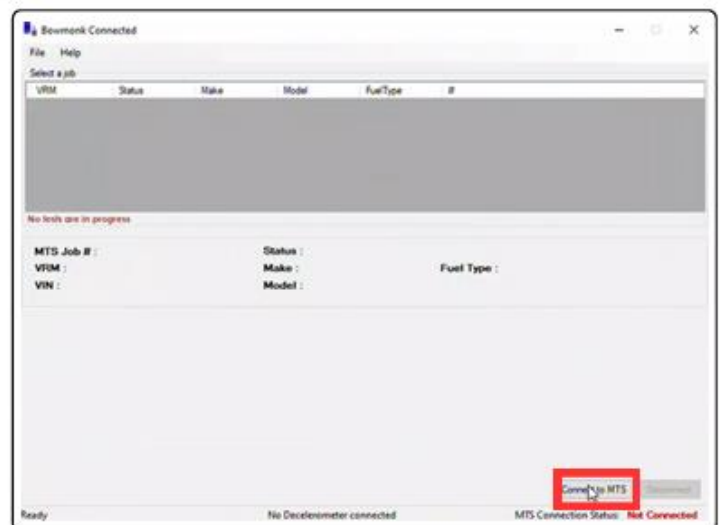
A member of the Garage Equipment Association



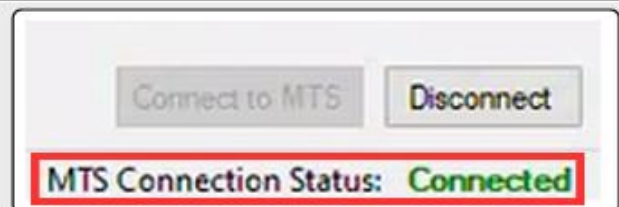
In the bottom of tMTS section will be an empty tick box labelled **'Auto Connect'**. Click the empty tick box so there is a tick mark inside, then click **'Save'** at the very bottom.



Now click the **'Connect to MTS'** button in the bottom right corner of Bowmonk Connected.



In the bottom right corner, you should now see **'MTS Connection Status: Connected'**.




www.concept-ge.co.uk

A member of the Garage Equipment Association



Now when you plug your decelerometer into the computer, turn it on then open Bowmonk Connected, you should see '**Decelerometer Connected**' in the centre at the bottom of the program.



Decelerometer connected on COM

Bowmonk Connected is now set-up and ready to be used to submit your results.



www.concept-ge.co.uk

A member of the Garage
Equipment Association

